

GRUPA FOLIAREX

FOLIAREX FOLIAREX FOROOF WIGOLEN

Roof systems

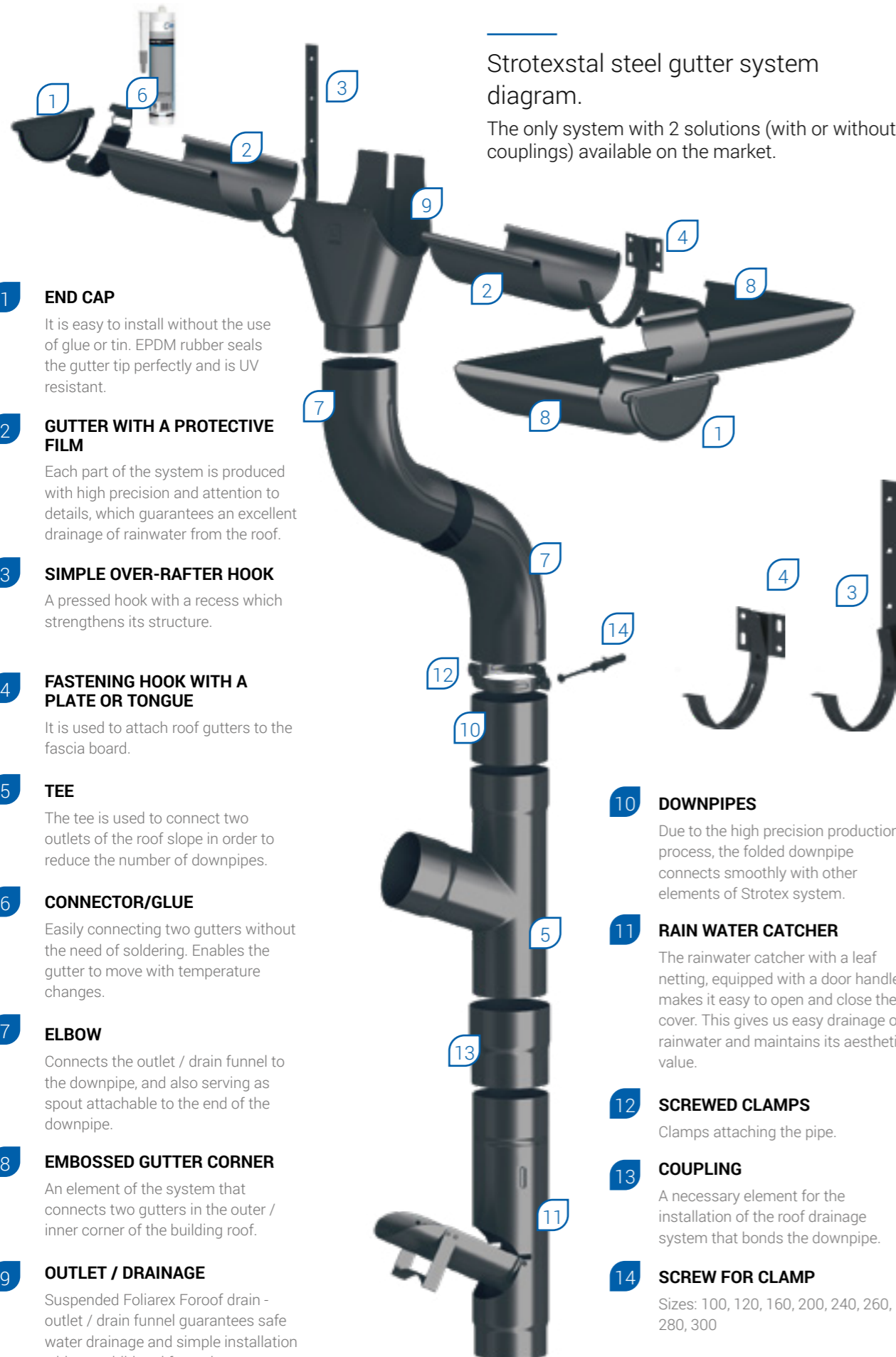
**STROTEX**



**FOLIAREX FOROOF**

- StrotexStal steel gutter system
- SquareLine steel gutter system
- Roof communication
- Snow protection
- Roofing eaves
- Ridge accessories
- Protection against birds / clips
- Construction foils / roofing membranes
- Agrotexiles

[WWW.FOLIAREXFOROOF.COM.PL](http://WWW.FOLIAREXFOROOF.COM.PL)



**Strotexstal steel gutter system diagram.**

The only system with 2 solutions (with or without couplings) available on the market.

**1 END CAP**

It is easy to install without the use of glue or tin. EPDM rubber seals the gutter tip perfectly and is UV resistant.

**2 GUTTER WITH A PROTECTIVE FILM**

Each part of the system is produced with high precision and attention to details, which guarantees an excellent drainage of rainwater from the roof.

**3 SIMPLE OVER-RAFTER HOOK**

A pressed hook with a recess which strengthens its structure.

**4 FASTENING HOOK WITH A PLATE OR TONGUE**

It is used to attach roof gutters to the fascia board.

**5 TEE**

The tee is used to connect two outlets of the roof slope in order to reduce the number of downpipes.

**6 CONNECTOR/GLUE**

Easily connecting two gutters without the need of soldering. Enables the gutter to move with temperature changes.

**7 ELBOW**

Connects the outlet / drain funnel to the downpipe, and also serving as spout attachable to the end of the downpipe.

**8 EMBOSSED GUTTER CORNER**

An element of the system that connects two gutters in the outer / inner corner of the building roof.

**9 OUTLET / DRAINAGE**

Suspended Foliarex Foroof drain - outlet / drain funnel guarantees safe water drainage and simple installation without additional fastening elements.

**10 DOWNPIPES**

Due to the high precision production process, the folded downpipe connects smoothly with other elements of Strotex system.

**11 RAIN WATER CATCHER**

The rainwater catcher with a leaf netting, equipped with a door handle makes it easy to open and close the cover. This gives us easy drainage of rainwater and maintains its aesthetic value.

**12 SCREWED CLAMPS**

Clamps attaching the pipe.

**13 COUPLING**

A necessary element for the installation of the roof drainage system that bonds the downpipe.

**14 SCREW FOR CLAMP**

Sizes: 100, 120, 160, 200, 240, 260, 280, 300



**GUTTER WITH A PROTECTIVE FOIL**

\* gutters in lengths of 3 or 4 m available on hand

\*\* gutters in lengths of 2.5.6 m available on request



**DRAIN PIPE WITH AN EXTERNAL PROTECTIVE FOIL**

\* pipes available in lengths of 1,2,3 or 4 m



**TRUCKER/OUTLET**



**STRAIGHT OVER RAFTER HOOK (LONG)\*\***



**FASTENING HOOK WITH A PLATE OR TONGUE (SHORT) \*\***



**CLAMPS MOUNTED WITHOUT A SCREW**



**ELBOW / SPOUT**



**90° INTERNAL / EXTERNAL PRESSED GUTTER CORNER**

Also available in the same sizes, systems made of galvanized steel and zinc-titanium.

SIZE	UOM	PACKING
25 (105)	RM	250 pcs
28 (127)	RM	210 pcs
33 (153)	RM	150 pcs
40 (192)	RM	80 pcs

SIZE	UOM	PACKING
80	RM	80 pcs
100	RM	54 pcs
120	RM	40 pcs
150	RM	24 pcs

SIZE	UOM	PACKING
25/80 (105/80)	pcs	25 pcs
28/80 (127/80)	pcs	25 pcs
28/100 (127/100)	pcs	25 pcs
33/100 (153/100)	pcs	25 pcs
33/120 (153/120)	pcs	25 pcs
40/120 (192/120)*	pcs	25 pcs
40/150 (192/150)*	pcs	25 pcs

SIZE	UOM	PACKING
25 (105)	pcs	50 pcs
28 (127)	pcs	50 pcs
33 (153)	pcs	50 pcs
40 (192)	pcs	50 pcs

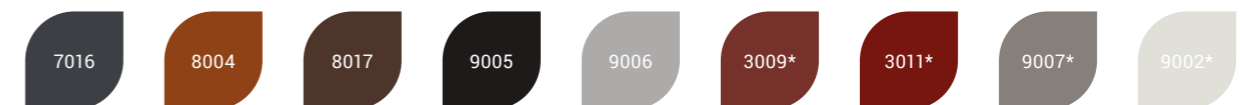
SIZE	UOM	PACKING
25 (105)	pcs	50 pcs
28 (127)	pcs	50 pcs
33 (153)	pcs	50 pcs
40 (192)	pcs	50 pcs

SIZE	UOM	PACKING
80	pcs	50 pcs
100	pcs	50 pcs
120	pcs	50 pcs
150	pcs	25 pcs

SIZE	UOM	PACKING
80/72°	pcs	30 pcs
100/72°	pcs	20 pcs
120/72°	pcs	12 pcs
150/72°	pcs	10/15 pcs

SIZE	UOM	PACKING
25 (105)	pcs	6 pcs
28 (127)	pcs	6 pcs
28 (127)/135*	pcs	6 pcs
33 (153)	pcs	6 pcs
33 (153)/135*	pcs	6 pcs
40 (192) soldered*	pcs	6 pcs

Available RAL colors:



\* individual valuation available on special request

\*\* 1 m long gutter requires 2 hooks

There are two possible methods of assembling the gutter system: using either a connector or a roofing adhesive sealant.

Details of the offer available on [www.foliarexforroof.com.pl](http://www.foliarexforroof.com.pl)



**RAIN WATER CATCHER**

SIZE	UOM	PACKING
80	pcs	10 pcs
100	pcs	10 pcs
120	pcs	9 pcs
150	pcs	9 pcs

**END CAP WITH GASKET**

SIZE	UOM	PACKING
25 (105)	pcs	50 pcs
28 (127)	pcs	50 pcs
33 (153)	pcs	50 pcs
40 (192)	pcs	50 pcs

**GUTTER CONNECTOR**

SIZE	UOM	PACKING
25 (105)	pcs	25 pcs
28 (127)	pcs	25 pcs
33 (153)	pcs	25 pcs
40 (192)	pcs	25 pcs

**TEE**

SIZE	UOM	PACKING
80/80*	pcs	25 pcs
100/80*	pcs	25 pcs
100/100	pcs	25 pcs
120/80*	pcs	25 pcs
120/100	pcs	25 pcs
120/120	pcs	25 pcs
150/150*	pcs	25 pcs

**SOCKET FOR DRAIN PIPE**

SIZE	UOM	PACKING
80	pcs	25 pcs
100	pcs	25 pcs
120	pcs	25 pcs



**CLAMP FOOT**

SIZE	UOM	PACKING
universal	pcs	250 pcs

**PUR 400 GUTTERS AND ROOF COVERINGS ADHESIVE SEALANT**

SIZE	UOM	PACKING
290ml cartridges	pcs	12 pcs

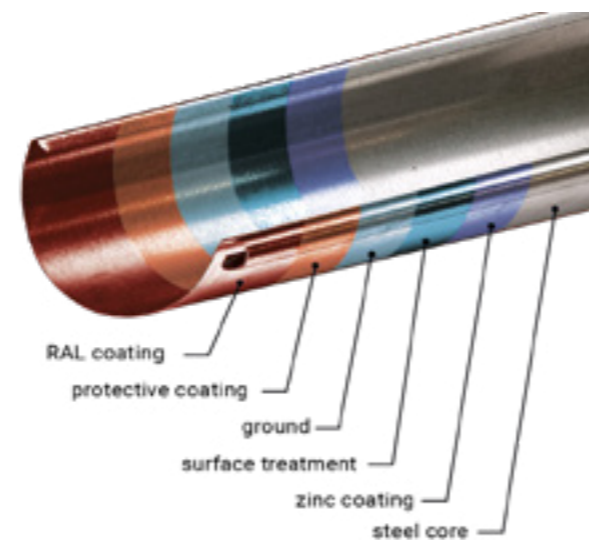
**DRAIN PIPE SETTLER**

gray, brown, black

SIZE	UOM	PACKING
universal	pcs	25 pcs

**CLIPS - ROOFING CAPS**

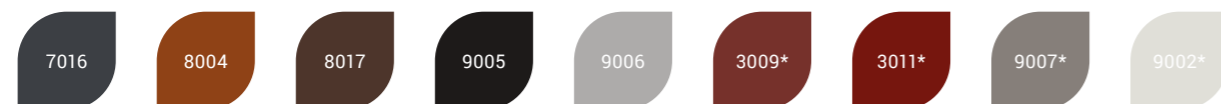
SIZE	UOM	PACKING
universal	pcs	10 pcs



**SYSTEM CAPACITY TABLE**

The way of placing the downpipe on the building	GUTTER / PIPE system size						
	105/80	127/80	127/100	153/100	153/120	192/120	192/150
	80 m <sup>2</sup>	100 m <sup>2</sup>	130 m <sup>2</sup>	200 m <sup>2</sup>	240 m <sup>2</sup>	270 m <sup>2</sup>	350 m <sup>2</sup>
	150 m <sup>2</sup>	205 m <sup>2</sup>	240 m <sup>2</sup>	370 m <sup>2</sup>	370 m <sup>2</sup>	450 m <sup>2</sup>	500 m <sup>2</sup>

Available RAL colors:



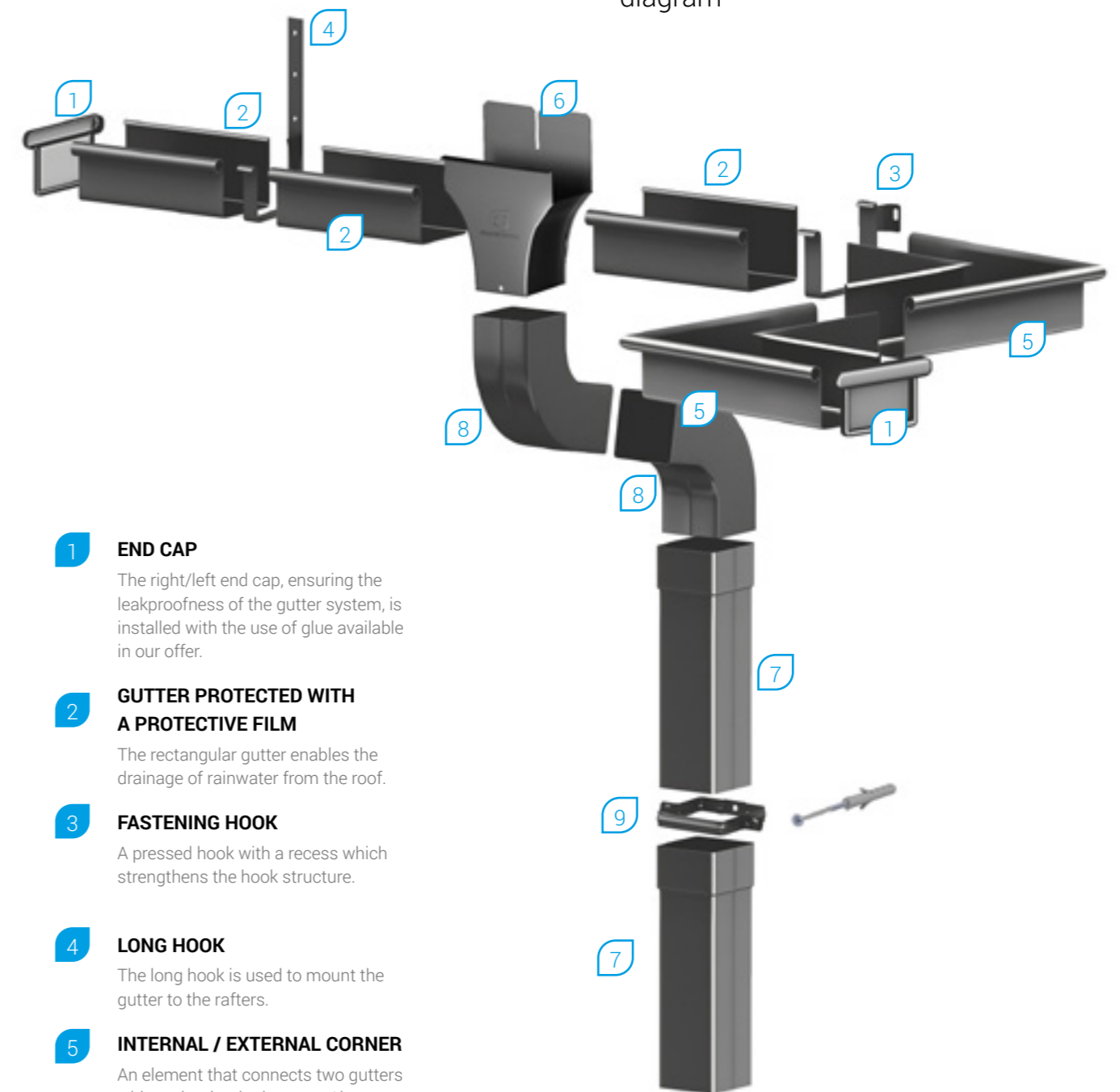
\* on special order, individual valuation

\*\* 2 hooks are used for 1 meter of the gutter

There are two possible methods of assembling the gutter system: using either a connector or a roofing adhesive sealant.

Details of the offer available on [www.foliarexforroof.com.pl](http://www.foliarexforroof.com.pl)

SquareLine steel gutter system diagram



- 1 END CAP**  
The right/left end cap, ensuring the leakproofness of the gutter system, is installed with the use of glue available in our offer.
- 2 GUTTER PROTECTED WITH A PROTECTIVE FILM**  
The rectangular gutter enables the drainage of rainwater from the roof.
- 3 FASTENING HOOK**  
A pressed hook with a recess which strengthens the hook structure.
- 4 LONG HOOK**  
The long hook is used to mount the gutter to the rafters.
- 5 INTERNAL / EXTERNAL CORNER**  
An element that connects two gutters with each other in the outer / inner corner of the building roof.
- 6 OUTLET/DRAINAGE**  
It guarantees safe drainage of water. No additional fixing elements are required for assembly.
- 7 DRAINPIPE**  
Produced with high precision, the downpipe fits perfectly to the rest of the SquareLine system.

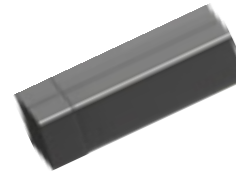
- 8 ELBOW**  
It is used to connect the outlet/drain funnel with the downpipe, and also acts as a spout, mounted at the end of the downpipe.
- 9 CLAMP**  
It is used to attach the downpipe to the building wall.



**GUTTER**

SIZE	UOM	PACKING
120	szt.	150 szt.

\*gutters available in lengths of 3 m.



**DRAIN PIPE**

SIZE	UOM	PACKING
100	szt.	54 szt.

\*pipes available in lengths of 3 m..



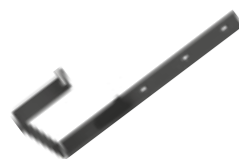
**OUTLET/DRAINAGE**

SIZE	UOM	PACKING
120/100	szt.	50 szt.



**SUSPENSION HOOK**

SIZE	UOM	PACKING
120	szt.	50 szt.



**LONG HOOK**

SIZE	UOM	PACKING
120	szt.	50 szt.



**CLAMP**

SIZE	UOM	PACKING
100	szt.	50 szt.



**ELBOW**

SIZE	UOM	PACKING
100	szt.	50 szt.



**INTERNAL/EXTERNAL CORNER**

gray, brown, black

SIZE	UOM	PACKING
120	szt.	



**END CAP**

SIZE	UOM	PACKING
120	szt.	100 szt.

Available RAL colors:



The gutter system is joined with roofing glue.  
Details of the offer available on [www.foliarexforroof.com.pl](http://www.foliarexforroof.com.pl)

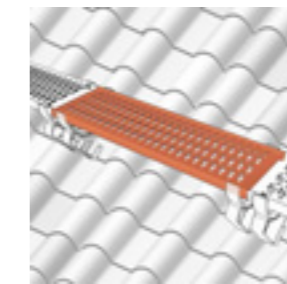
The **STROTEX roof communication system** consists of steps, chimney, and sweep benches, that enable a safe inspection of the roof and facilitate access to the chimney flues for necessary inspections and repairs.



**CHIMNEY SWEEP BENCH**

**Unit of measure:**  
pcs | packing 5 pcs

**Size**  
400 x 250 mm | 600 x 250 mm  
800 x 250 mm | 1000x250 mm  
1200 x 250 mm | 1500 x 250 mm  
2000 x 250 mm | 3000 x 250 mm



**CRADLE CHIMNEY BENCH MOUNT**

Galvanized steel  
Made of a flat bar

**Unit of measure:**  
pcs | packing 6 pcs  
**Size:** 40 x 4 mm



**BENCH AND STEP BRACKET - ROOF TILE**

**Unit of measure:**  
pcs | packing 6 pcs  
**Size:** 40 x 4 mm



**BENCH AND STEP STEEL SHEET TILE**

**Unit of measure:**  
pcs | packing 6 pcs  
**Size:**  
350/20 mm | 400/20 mm  
330/30 mm | 350/35 mm  
350/30 mm | 370/35 mm



**WALL-MOUNTED BENCH AND STEP BRACKET**

**Unit of measure:**  
pcs | packing 6 pcs  
**Size:** 40 x 4 mm



**STANDING HANDLE SEAM FIXING HOLDER**

**Unit of measure:**  
pcs | packing 5 pcs  
**Size:** 40 x 4 mm



**CHIMNEY BENCH CONNECTOR**

Galvanized steel  
Made of a flat bar

**Unit of measure:**  
pcs | packing 6 pcs  
**Size:** 40 x 4 mm, długość 250 mm



**BENCH AND STEP BRACKET - PLAIN EPDM RUBBER TILE**

**Unit of measure:**  
pcs | packing 6 pcs  
**Size:** 40 x 4 mm



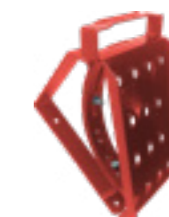
**BRACKET FOR BENCH AND STEP FOR FLAT TILE WITH RUBBER EPDM**

**Unit of measure:**  
pcs | packing 6 pcs  
**Size:** 40 x 4 mm



**UNIVERSAL BENCH AND STEP BRACKET**

**Unit of measure:**  
pcs | packing 6 pcs  
**Size:** 40 x 4 mm



**CHIMNEY SWEEP STEP**

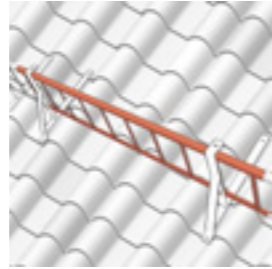
Made of sheet metal  
1.5 mm thick  
**Unit of measure:**  
pcs | packing 5 pcs  
**Size:** podstawa 4 mm

Available RAL colors:



\* additional colors on request

The STROTEX snow protection system consists of snow fences, pipes, connectors, brackets and snow protectors. It constitutes a snow barrier in the lower part of the roof slope. It prevents the accumulation of excess snow in the guttering, keeping it directly on the roof and protecting the gutter system from damage. The system also eliminates the formation of icicles by gradually releasing water from the retained melting snow



**ROOF TILE FENCE**

**Unit of measure:**  
pcs | packing 6 pcs  
**Size:**  
1200 x 180 mm  
2000 x 180 mm  
3000 x 200 mm



**UNIVERSAL SNOW HEDGE SUPPORT**

**Unit of measure:**  
pcs | packing 6 pcs  
**Size:** 4 x 30 x 180 mm



**THE CONECTOR OF THE SNOW BARRIER FENCE**

**Unit of measure:**  
pcs | packing 50 pcs



**ROOF TILE SUPPORT BRACKET TYPE A**

**Unit of measure:**  
pcs | packing 6 pcs  
**Size:** 4 x 30 x 180 mm



**SNOW PROTECTOR BRACKET B TYPE ROOF TILE**

**Unit of measure:**  
pcs | packing 6 pcs  
**Size:** 4 x 30 x 180 mm



**SUPPORT FOR ANTI-SLIP HIDDEN FOR STANDING SEAM BRACKET**

Used for mounting on the standing seam mounting bracket.  
**Unit of measure:**  
pcs | packing 6 pcs



**SNOW PROTECTOR BRACKET PLAIN TILE**

**Unit of measure:**  
pcs | packing 6 pcs  
**Size:** 4 x 30 x 180 mm



**SNOWCATCHER CONCRETE ROOF TILE**

**Size:** universal  
**RAL colors:** 8017, 8004, 9005



**SNOWCATCHER CERAMIC ROOF TILE**

On request, under the type roof tiles  
**RAL colors:** 8017, 8004, 9005

Available RAL colors:



\* additional colors on request



**UNIVERSAL ANTI-SNOW PIPE BRACKET**

**Unit of measure:**  
pcs | packing 5 pcs  
**Size:** universal



**SNOW PIPES BRACKET**

**Unit of measure:**  
pcs | packing 6 pcs  
**Modules, size:**  
330/30 mm | 350/35 mm  
350/30 mm | 370/35 mm



**STANDING SEAM SNOW PIPES BRACKET T-TYPE and L-TYPE**

**Unit of measure:**  
spcs | packing 5 pcs



**PLAIN TILE SNOW PIPES BRACKET**

**Unit of measure:**  
pcs | packing 6 pcs



**SUPPORT FOR SNOW PIPES A TYPE ROOF TILE**

**Unit of measure:**  
pcs | packing 6 pcs



**SUPPORT FOR SNOW PIPES TYPE B ROOF TILE**

**Unit of measure:**  
pcs | packing 6 pcs



**PIPE CONNECTOR**

**Unit of measure:**  
pcs | packing 25 pcs  
**Size:** length 10 cm



**PLASTIC/SYNTHETIC PIPE PLUG**

**Unit of measure:**  
pcs | packing 50 pcs  
**Size:** length 3 cm



**COATED STEEL SNOW TUBE**

**Size:** length 2 meters



**PIPE LOCK**

**Unit of measure:**  
pcs | packing 50 pcs  
**Size:** length 3 cm

Available RAL colors:



\* additional colors on request

The main function of **the hood** is to keep the rainwater away from the walls of the building. Eaves combs provide the required air inlet cross-section under the cover, and also protect the roof against birds and small rodents from getting under the roof. Sheet metal flashings protect the building against bad weather conditions.

**Ridge tapes and ridge accessories** enable proper ventilation of the ridge, protecting the roof against penetration of blown snow, rain, moisture and dust. Ridge tapes used directly under the ridge tiles allow the air and water vapor accumulated under the roofing to be driven-off.



**EAVES COMB WITH A GRATE**

**Unit of measure:** pcs | packing 50 pcs  
**Size:** length 1000 mm | tooth length: 60 mm  
**Colors:** black, brick, brown



**EAVE COMB FLAT**

**Unit of measure:** pcs | packing 300 pcs  
**Size:** length 1000 mm | tooth length: 60 mm  
**Colors:** black, brick, brown



**EAVES GRATE IN A ROLE**

**Unit of measure:** pcs | packing 20 pcs  
**Size:** 5000 x 80 mm | 5000 x 100 mm  
**Colors:** black, brick, brown



**ROOF-EDGE FLASHING**

**Unit of measure:** pcs | packing 10 pcs  
**Size:** 2 m  
**Colors:** zinc, brown, graphite



**VERGE TRIM SECTION**

**Unit of measure:** pcs | packing 10 pcs  
**Size:** 2 m  
**Colors:** zinc, brown, graphite



**VALLEY GUTTER**

**Unit of measure:** pcs | packing 5 pcs  
**Size:** 2 m  
**Colors:** zinc, brown, graphite



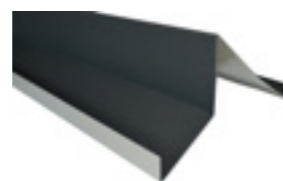
**KICKOUT FLASHING**

**Unit of measure:** pcs | packing 10 pcs  
**Size:** 2 m  
**Colors:** zinc, brown, graphite



**ROOF RIDGE**

**Unit of measure:** pcs | packing 5 pcs  
**Size:** 2 m  
**Colors:** zinc, brown, graphite



**EDGE SHEET**

**Unit of measure:** pcs | packing 5 pcs  
**Size:** 2 m  
**Colors:** zinc, brown, graphite



**EXTERNAL STEEL WINDOW LEDGE**

**Unit of measure:** pcs | packing 5 pcs  
**Size:** 20 x 120, 20 x 150, 20 x 200, 25 x 120, 25 x 150, 25 x 200 cm  
**Colors:** white, brown, graphite, walnut, golden oak



**STROTEX AL 300 RIDGE TAPE**

**Unit of measure:** pcs | packing 4 szt.  
**Size:** 300 mm x 5 m  
**Colors:** brown, brick, black, graphite



**STROTEX 310 RIDGE TAPE**

**Unit of measure:** pcs | packing 4 szt.  
**Size:** 310 mm x 5 m  
**Colors:** brown, brick, black, graphite



**STROTEX 230 RIDGE TAPE**

**Unit of measure:** pcs | packing 11 szt.  
**Size:** 230 mm x 5 m  
**Colors:** brown, brick, black, graphite



**BL RIDGE BATTEN BRACKET**

**Unit of measure:** pcs | packing 100 szt.  
**Size:** 40,50 mm



**GW RIDGE BATTEN BRACKET**

**Unit of measure:** pcs | packing 100 szt.  
**Size:** 180, 210, 230, 260 – 40,50 mm



**STROTEX BUTYL TAPE**

**Unit of measure:** pcs | packing 100 szt.  
**Size:** 1 x 15 x 45 mb  
**Colors:** gray, black



**WEDGE SEAL**

**Unit of measure:** pcs | packing 20 szt., 100 szt.  
**Size:** 30 x 60 x 1000 mm  
**Density:** 18 – 20 kg/m<sup>3</sup>



**RIDGE END CAP PCV**

**Colors:** brown, brick, black

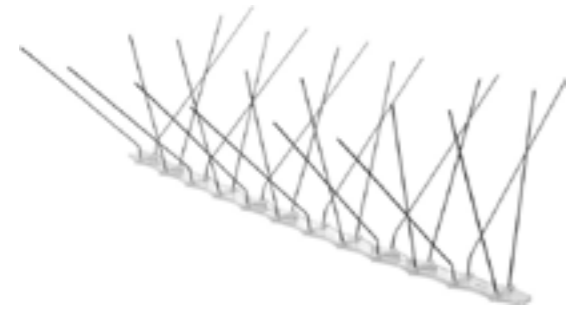


**EXPANSION TAPE**

**Size:** 20/10 (20/50 mm roll 5m), 20/8 (20/40 mm roll 5m)

### Protection against birds

The bird protection system effectively deters birds from undesired places, i.e. cornices, window sills, gutter stripes, balconies, etc.



#### BS TYPE

##### Size:

width of the spikes spacing: 100 mm  
 spikes height : 110 mm  
 number of wires: 72 m  
 spike protection area: 280 mm  
 module length: 341 mm  
 package: 120 pcs

### Clips

Roof tile clips are available in various versions, matching the type of roof tiles.



#### CLIP WITH HOOK

with hook K, with hook O  
**Packing:** 100 pcs



#### CUT TILE CLIP

**Packing:** 100 pcs



#### U CLIP

Size: small, large  
**Packing:** 100 pcs



#### UNIVERSAL CLIP

Size: 280 mm, 320 mm, 340 mm  
**Packing:** 100 pcs



#### K CLIP

Size: 75 x 48 mm, 75 x 65 mm,  
 85 x 65 mm  
**Packing:** 100 pcs



#### CLIP WITH HIGH ZIPPER

Size: 2,5 mm thick wire  
**Packing:** 100 pcs



#### J CLIP

Size: 40 mm, 50 mm  
**Packing:** 250 pcs



#### CLIPPING MONK-NUN MM

Size: 40 mm, 60 mm  
**Packing:** 100 pcs

### Strotex MUSTANG modular steel roofing tiles



#### STROTEX MUSTANG MODULAR STEEL ROOFING TILES

##### Size:

total width: 1,20 m  
 total length: 0,711 m  
 the total area of the sheet: 1,20 m x 0,711 m = 0,853 m<sup>2</sup>

covering width 1,14 m  
 covering length 0,7 m  
 covered area 1,14m x 0,70m = 0,798 m<sup>2</sup>

batten spacing – 0,35 m

**available colors:** graphite, brown and brick  
**number of pieces on a pallet:** 100

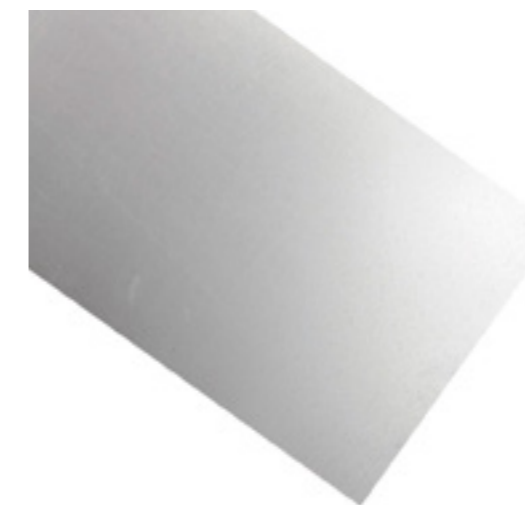
### Ridge tiles



#### RIBBON FOR ROOF TILE

length 2 m / cover length 1,9 m  
**Available colors:** graphite, brown and brick  
**Number of pieces on a pallet:** 100

### Flat sheet in slabs

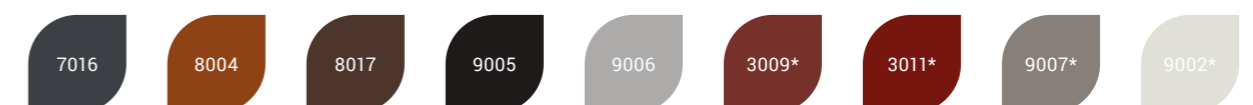


#### FLAT SHEET

##### Dimensions:

galvanized: 1,0 x 2,0 x 0,5 m  
 colors: 7016/8017: 1,25 x 2,0 x 0,5 m  
**Number of pieces on a pallet:** 100

Available RAL colors:



The Strotex family is growing!

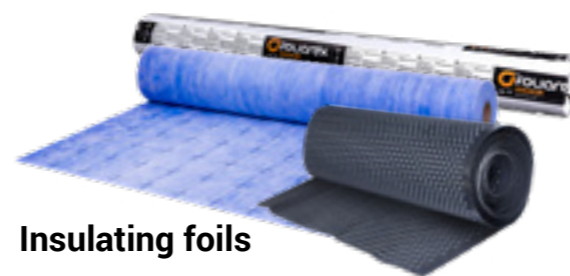


**4-layer roof membranes**  
Highly vapor-permeable

- high water vapor permeability
- waterproof
- absorption capacity
- resistant to mechanical damage
- resistant to uv radiation

**Vapor barrier and windproof foils**

- protection against moisture
- resistant to mechanical damage
- thermal protection
- absorption capacity
- waterproof



**3-layer roof membranes**  
(economic version)

- high water vapor permeability
- waterproof
- windproofing properties

**Insulating foils**

- protection against moisture
- resistant to mechanical damage
- waterproof

4-layer highly permeable membranes



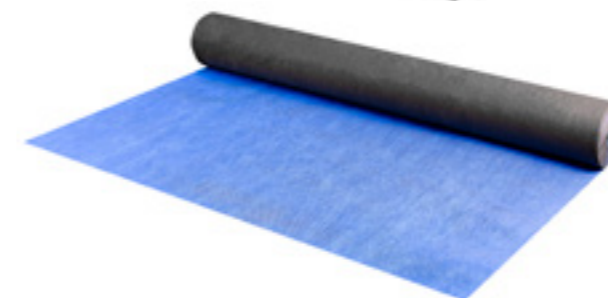
**STROTEX-Q UV PROTECT – NEW**

Available in 3 variants: without an adhesive belt system or with a system of 1 or 2 adhesive strips  
**Weight:** 230 g/m<sup>2</sup>  
**Roll dimensions:** 1,5 m x 50 m



**STROTEX-Q TPU**

**Weight:** 220 g/m<sup>2</sup> | 180g/m<sup>2</sup>  
**Roll dimensions:** 1,5 m x 50 m



**STROTEX-Q ADVANCED PLUS**

**Weight:** 260 g/m<sup>2</sup>  
**Roll dimensions:** 1,5 m x 50 m



**STROTEX-Q PERFORMANCE**

Available in 3 variants: without an adhesive belt system or with a system of 1 or 2 adhesive strips  
**Weight:** 220 g/m<sup>2</sup>  
**Roll dimensions:** 1,5 m x 50 m



**STROTEX-Q NEXTREME**

Available in 3 variants: without an adhesive belt system or with a system of 1 or 2 adhesive strips  
**Weight:** 200 g/m<sup>2</sup>  
**Roll dimensions:** 1,5 m x 50 m



**STROTEX-Q EXTREME**

**Weight:** 180 g/m<sup>2</sup>  
**Roll dimensions:** 1,5 m x 50 m



4-layer highly permeable membranes



**STROTEX-Q SUPREME**  
Weight: 170 g/m<sup>2</sup>  
Roll dimensions: 1,5 m x 50 m



**STROTEX-Q STRONG 200**  
Weight: 200 g/m<sup>2</sup> | 160 g/m<sup>2</sup>  
Roll dimensions: 1,5 m x 50 m



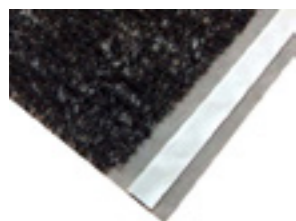
**STROTEX-Q AKTIV PP 135**  
Weight: 135g/m<sup>2</sup>  
Roll dimensions: 1,5 m x 50 m



**STROTEX DYNAMIC**  
Weight: 135 g/m<sup>2</sup>  
Roll dimensions: 1,5 m x 50 m



**STROTEX EXPERT**  
Weight: 115 g/m<sup>2</sup>  
Roll dimensions: 1,5 m x 50 m



**V-MAX STRUCTURAL MAT**  
– a roof membrane with a braid  
Weight: 450 g/m<sup>2</sup>  
Roll dimensions: 1,5 m x 25 m



**BRAID**  
Weight: 300 g/m<sup>2</sup>  
Roll dimensions: 1,4 m x 30 m

3-layer roof membranes in the economic version



**STROTEX MEDIUM**  
Weight: 150 g/m<sup>2</sup>  
Roll dimensions: 1,5 m x 50 m



**STROTEX V**  
Weight: 135 g/m<sup>2</sup>  
Roll dimensions: 1,5 m x 50 m



**STROTEX BASIC**  
Weight: 115 g/m<sup>2</sup>  
Roll dimensions: 1,5 m x 50 m



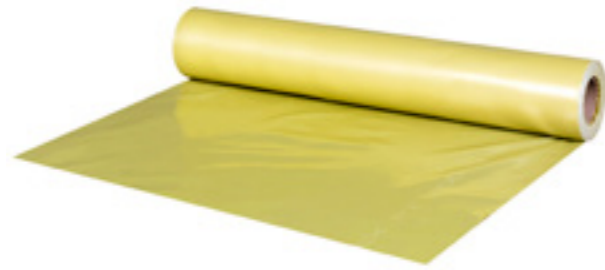
**STROTEX TOPLES**  
Weight: 95 g/m<sup>2</sup>  
Roll dimensions: 1,5 m x 50 m

Underfloor heating mat



**STROTEX HOTFLOOR**  
Weight: 100g/m<sup>2</sup>  
Roll dimensions: 1 m x 25 m, 1 m x 50 m

Vapor barrier foils



**FOLIAREX PI 200-N - CLASSIC VAPOR INSULATION**  
 Weight: 200 µm  
 Roll dimensions: 2m x 50 m, 4m x 25 m, 4m x 50 m



**BUDFOL ANTYDROP - ACTIVE VAPOR INSULATION**  
 Weight: 100g/m<sup>2</sup>  
 Roll dimensions: 1,5 m x 50 m



**STROTEX AL 180, 150, 90 - VAPOR INSULATION REINFORCED ALUMINUM**  
 Weight: 180g/m<sup>2</sup>, 150g/m<sup>2</sup>, 90g/m<sup>2</sup>  
 Roll dimensions: 1,5 m x 50 m



**STROTEX 110 PI - REINFORCED VAPOR INSULATION**  
 Weight: 110g/m<sup>2</sup>  
 Roll dimensions: 1,5 m x 50 m



**STROTEX 110 PP - LOW VAPOR PERMEABILITY ROOF FOIL**  
 Weight: 220 g/m<sup>2</sup>  
 Roll dimensions: 1,5 x 50 m

The wind barrier



**WIGOFOL 100 - WIND INSULATION**  
 Weight: 100g/m<sup>2</sup>  
 Roll dimensions: 1,5 m x 50 m

Insulating foils



**Q-IZOLMAT**  
 Weight: 175g/m<sup>2</sup>  
 Roll dimensions: 0,2m x 30 m, 0,3m x 30 m, 1,0m x 30 m



**FOLIAREX IZ 200-N**  
 Weight: 200 µm  
 Roll dimensions: 1,5 m x 50 m  
 The offer also includes 150, 300 and 500 versions as well as an untested protective version.



**BUBBLE FOIL**  
 Size: 400g/m<sup>2</sup>  
 Roll dimensions: 1 x 20, 1,5 x 20, 2 x 20 m



**WALL HORIZONTAL INSULATION FOIL**  
 Size: 0,3 x 30, 0,4 x 50, 0,5 x 50, 0,3 x 65 50 m

Agrotextiles, agrotexiles



**AgroWIG 80, 90, 100 agrotexile**  
 Color: black, green, brown  
 Available widths: 60, 80, 110, 160, 210(S), 320(S) cm  
 Roll length: 100 m  
 Also available in packages: 1,6x5; 1,6x10m; 1,1x5m; 1,1x10m

**Wigofil 23, 50, 100, 150 nonwoven crop cover**  
 Color: white, black, brown  
 Width: 160cm  
 Roll length: 100m  
 Also available in packages: 1,6x5m; 1,6x10m

# GRUPA FOLIAREX

FOLIAREX FOLIAREX FOROOF WIGOLEN

FOLIAREX FOROOF

Foliarex Foroof Sp. z o.o.

ul. Przejazdowa 2 A,B

42-280 Częstochowa

e-mail: bok@foliarexforoof.com.pl

[WWW.FOLIAREXFOROOF.COM.PL](http://WWW.FOLIAREXFOROOF.COM.PL)



th dimension  
of technology